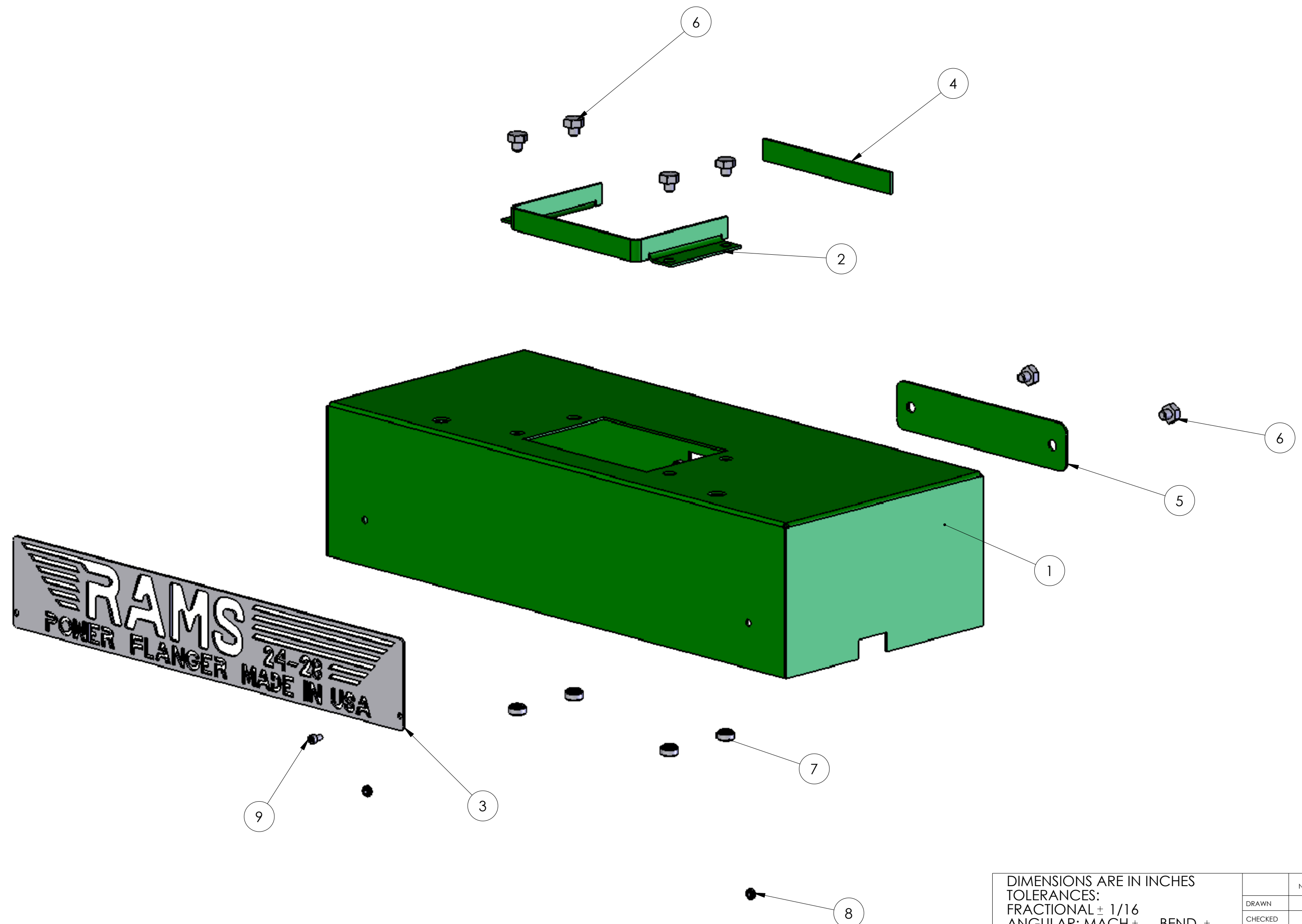


ITEM NO.	QTY.	PART NUMBER	DESCRIPTION
1	1	2421-4-R	RETROFIT COVER
2	1	PF-1025-R	LOWER SHROUD
3	1	2421-3-R	LETTERS
4	1	PF-1028-R	LOWER SHROUD (BACK)
5	6	2421-5-R	1/4-20 x 1/4' LONG HEX BOLTS
6	1	2421-1	ACCESS COVER
7	6	2421-6-R	1/4-20 PEM NUT
8	2	2421-7-R	6-32 PEM NUTS
9	2	2421-8-R	91255A146



DIMENSIONS ARE IN INCHES
 TOLERANCES:
 FRACTIONAL ± 1/16
 ANGULAR: MACH ± BEND ±
 TWO PLACE DECIMAL ±.01
 THREE PLACE DECIMAL ±.005

THE INFORMATION CONTAINED IN THIS DRAWING IS THE SOLE PROPERTY OF HORIZON SYSTEMS MACHINING. ANY REPRODUCTION IN PART OR AS A WHOLE WITHOUT THE WRITTEN PERMISSION OF HORIZON SYSTEMS MACHINING IS PROHIBITED.

	NAME	DATE
DRAWN	JAS	3/15/06
CHECKED		
ENG APPR.		
MFG APPR.		
Q.A.		

HORIZON SYSTEMS MACHINING
 9121 58TH PLACE
 KENOSHA, WI 53144
 PH: 262-605-1122
 FAX: 262-605-1198

MATERIAL		TITLE: RETROFIT ASSEMBLY	
FINISH		SIZE DWG. NO.	REV
DO NOT SCALE DRAWING		C RAMS-2003-R	A
		SCALE: 1:4	SHEET 2 OF 8